



# GEARS 齒輪

- Helical Gear 正傘型齒輪
- Sprial Gear 螺旋齒輪
- Worm Gear 蝸輪
- Rack 齒條
- Spur Gear 正齒輪



[tshconveyor@hotmail.com](mailto:tshconveyor@hotmail.com)



02-036-0997-8,  
02-036-0896



[www.tshconveyor.com](http://www.tshconveyor.com)

**THAI SAN HER CONVEYOR CO.,LTD.**

Machinery Parts Manufacturer

ผู้ผลิตอะไหล่เครื่องจักรอุตสาหกรรม

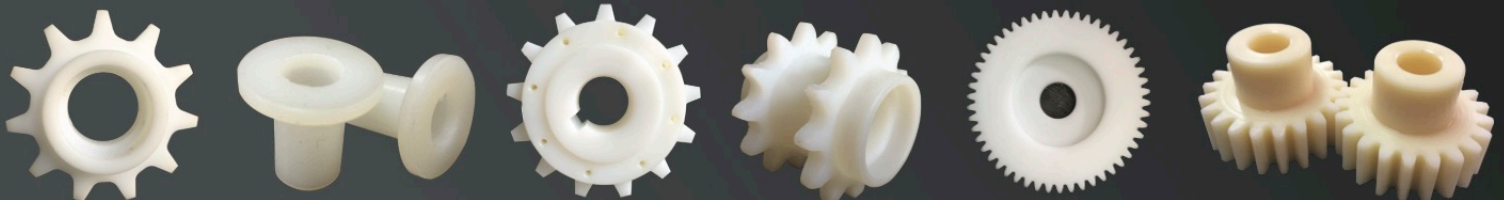
# GEARS

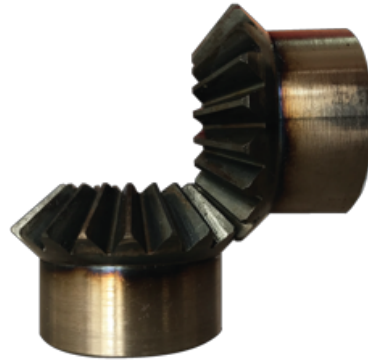
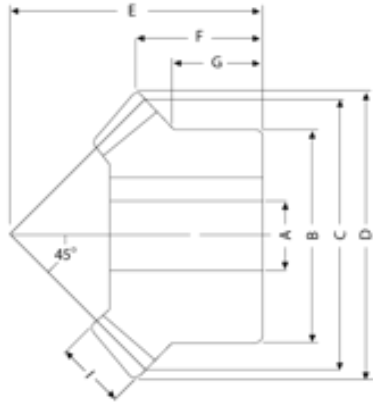
ผลิตเฟืองทุกชนิด



# ENGINEERING PLASTIC

วัสดุพลาสติกสำหรับวิศวกรรม/อุตสาหกรรม



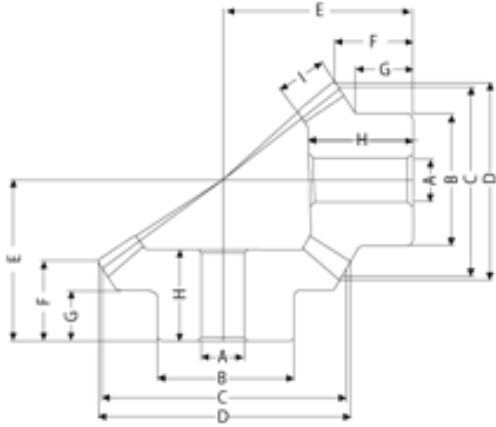


模數 Module	齒數 T	A	B	C	D	E	F	G	H	I
M 1	- 20	6	16	20	21.4	20	10.7	8	12	5
M 1.25	- 20	8	22	25	26.7	23	11.3	9	13	6
M 1.5	- 20	8	26	30	32.1	30	16.1	13	19	8
M 2	- 20	12	34	40	42.8	37	18.4	14	22	10
M 2.5	- 20	14	42	50	53.5	47	23.8	18	28	12
M 3	- 20	16	50	60	64.2	55	27.1	20	32	15
M 3.5	- 20	20	60	70	74.9	65	32.5	25	40	18
M 4	- 20	20	64	80	85.6	75	37.8	27	45	20
M 5	- 20	25	80	100	107.0	90	43.5	30	54	26
M 6	- 20	28	100	120	128.5	100	44.2	30	56	30
M 8	- 20	30	130	160	171.3	125	50.7	30	62	35

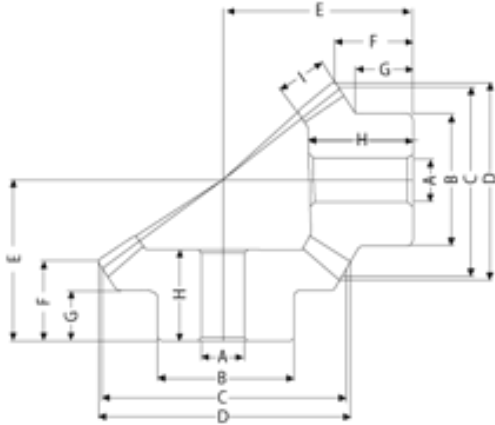
M 1	- 25	6	20	25	26.4	23	11.2	8	14	6
M 1.25	- 25	8	25	31.2	33.0	28	13.2	9.5	16	7
M 1.5	- 25	10	30	37.5	39.6	34	16.3	11.5	19	9
M 2	- 25	12	40	50	52.8	40	16.4	10	20	12
M 2.5	- 25	16	50	62.5	66.0	50	20.5	12.5	26	15
M 3	- 25	20	60	75	79.2	60	24.6	15	32	20
M 3.5	- 25	25	70	87.5	92.4	70	28.7	17.5	37	22
M 4	- 25	28	80	100	105.6	80	32.8	20	43	25
M 5	- 25	28	100	125	132.0	100	41.0	25	50	30
M 6	- 25	28	120	150	158.5	120	49.2	30	61	35

M 1	- 30	8	24	30	31.4	28	13.7	10	16	6
M 1.25	- 30	10	30	37.5	39.3	36	18.1	13.5	21	8
M 1.5	- 30	10	36	45	47.1	43	21.5	16	25	10
M 2	- 30	12	45	60	62.8	50	21.4	12.5	25	12
M 2.5	- 30	16	60	75	78.5	62	26.3	17	32	15
M 3	- 30	20	70	90	94.2	75	32.1	20	40	20
M 3.5	- 30	25	80	105	110.0	85	35.0	20	45	22
M 4	- 30	28	100	120	125.6	95	37.8	25	50	25
M 5	- 30	28	130	150	157.1	120	48.5	35	62	30

M 1.5	- 20	10	26	30	32.1	30	16.1	13	19	8
M 2	- 20	12	34	40	42.8	35	16.4	12	21	12
M 2.5	- 20	14	40	50	53.5	50	26.8	20	32.5	14
M 3	- 20	16	46	60	64.2	60	32.1	23	37	15
M 3.5	- 20	20	60	70	74.9	65	32.5	25	40	18
M 4	- 20	20	60	80	85.6	75	37.8	25	45	20
M 5	- 20	25	80	100	107.0	90	42.4	30	54	28
M 6	- 20	25	90	120	128.5	110	54.2	35	65	32
M 8	- 20	32	100	160	171.3	125	50.7	32	70	45

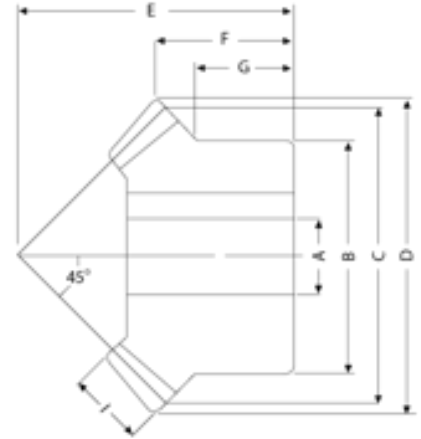


模數 Module	齒數 T	A	B	C	D	E	F	G	H	I
M 1.5	- 3015	8	25	45	45.9	25	14.6	9	15	8
M 1.5	- 1530	6	16	22.5	26.1	32	10.4	7.9	15.5	
M 2	- 3015	10	30	60	61.2	31	17.2	10	18	11
M 2	- 1530	8	22	30	34.8	40	11.2	8	18	
M 2.5	- 3015	15	40	75	76.5	40	22.7	15	24	15
M 2.5	- 1530	12	30	37.5	43.5	55	19	15.6	29	
M 3	- 3015	16	50	90	91.8	50	29.3	18	30	20
M 3	- 1530	12	35	45	52.5	70	26.8	22.5	41	
M 4	- 3015	20	60	120	122.3	60	32.3	20	36	25
M 4	- 1530	16	50	60	69.6	85	27.4	22.5	46	
M 5	- 3015	20	70	150	152.9	75	40.4	25	48	30
M 5	- 1530	20	60	75	87.0	110	38.0	31.2	58	
M 1	- 4020	8	25	40	40.6	22	12.6	8	12	6
M 1	- 2040	6	16	20	22.4	28	8.6	7	12	
M 1.25	- 4020	10	32	50	50.7	27	15.2	10	16	8
M 1.25	- 2040	8	22	25	28.0	36	11.7	10.2	17	
M 1.5	- 4020	10	38	60	60.9	35	20.9	15	22	10
M 1.5	- 2040	8	25	30	33.6	46	16.9	14.7	24	
M 2	- 4020	12	40	80	81.1	45	26.2	18	27	15
M 2	- 2040	12	32	40	44.8	60	21.2	18	32	
M 2.5	- 4020	15	50	100	101.4	55	31.5	20	35	20
M 2.5	- 2040	12	40	50	56.0	75	26.5	22.5	41	
M 3	- 4020	20	60	120	121.7	65	36.8	24	38	22
M 3	- 2040	16	50	60	67.2	90	31.8	27.5	47	
M 4	- 4020	20	70	160	162.3	80	42.3	28	45	28
M 4	- 2040	20	60	80	89.6	120	43.4	35	62	
M 5	- 4020	25	100	200	202.9	90	42.9	23	50	30
M 5	- 2040	20	80	100	112.0	140	43.0	35	63	



模數 Module	齒數 T	A	B	C	D	E	F	G	H	I
M 1.5	- 3020	10	30	45	46.2	28	13.9	8	16	9
M 1.5	- 2030	8	25	30	33.1	33	11.5	8.8	17	
M 2	- 3020	10	35	60	61.6	40	21.5	15	23	11
M 2	- 2030	10	30	40	44.2	45	16.4	11.6	22	
M 2.5	- 3020	15	45	75	77.0	50	26.5	18	30	15
M 2.5	- 2030	12	35	50	55.2	55	19.2	12.5	28	
M 3	- 3020	15	50	90	92.5	55	26.9	17	31	17
M 3	- 2030	15	45	60	66.3	70	27.0	20	37	
M 4	- 3020	20	70	120	123.3	75	37.5	25	40	20
M 4	- 2030	15	60	80	88.4	90	32.8	23.3	43	
M 5	- 3020	25	90	150	154.1	90	43.1	24	50	30
M 5	- 2030	20	80	100	110.5	110	38.5	28.3	56	
M 1	- 4515	8	30	45	45.4	17	10.1	5	9	6
M 1	- 1545	6	12	15	17.7	29	7.0	6	12	
M 1.25	- 4515	10	34	56.25	56.7	21	12.3	6	12	8
M 1.25	- 1545	8	15	18.75	22.1	36	8.4	7.3	15	
M 1.5	- 4515	10	36	67.5	68.0	28	17.6	11	17	10
M 1.5	- 1545	8	18	22.5	26.5	47	13.9	12.5	22.5	
M 2	- 4515	12	40	90	90.7	40	26.1	17	26	15
M 2	- 1545	10	24	30	35.3	60	15.9	14	29	
M 2.5	- 4515	15	50	112.5	113.4	50	32.7	22	35	20
M 2.5	- 1545	12	30	37.5	44.2	75	19.9	17.5	37	
M 3	- 4515	20	60	135	136.1	55	34.2	20	35	23
M 3	- 1545	25	38	45	53.0	90	23.8	21.3	43	
M 4	- 4515	20	80	180	181.5	70	42.2	24	45	30
M 4	- 1545	16	50	60	70.7	115	26.8	23.3	52	
M 5	- 4515	25	90	225	226.8	75	40.3	20	44	35
M 5	- 1545	20	60	75	88.3	145	34.7	30	65	

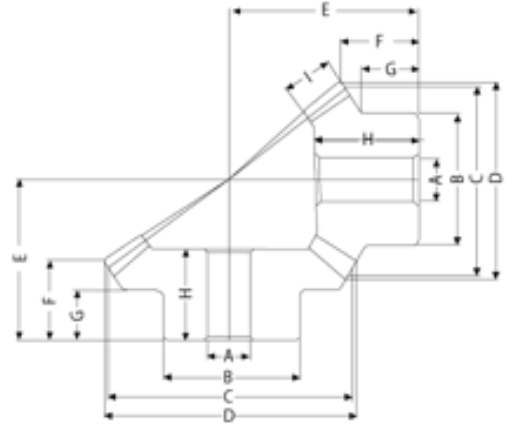
模數 Module	齒數 T	A	B	C	D	E	F	G	H	I
M 1	- 20 R	6	16	20	21.2	20	10.6	8	12	5
M 1	- 20 L									
M 1.25	- 20 R	8	22	25	26.5	23	11.3	9	13	6
M 1.25	- 20 L									
M 1.5	- 20 R	9	26	30	31.8	30	15.9	13	19	8
M 1.5	- 20 L									
M 2	- 20 R	12	34	40	42.4	37	18.2	14	22	10
M 2	- 20 L									
M 2.5	- 20 R	14	42	50	53.0	48	24.5	19	29	12
M 2.5	- 20 L									
M 3	- 20 R	16	50	60	63.6	58	29.8	23	35	15
M 3	- 20 L									
M 3.5	- 20 R	20	60	70	74.2	65	32.1	25	40	18
M 3.5	- 20 L									
M 4	- 20 R	20	64	80	84.8	75	37.4	27	45	20
M 4	- 20 L									
M 5	- 20 R	25	80	100	106.0	90	43.0	30	54	26
M 5	- 20 L									
M 6	- 20 R	28	100	120	127.2	104	47.6	34	60	30
M 6	- 20 L									



模數 Module	齒數 T	A	B	C	D	E	F	G	H	I
M 1	- 25 R	6	20	25	26.2	23	11.1	8	14	6
M 1	- 25 L									
M 1.25	- 25 R	8	25	31.2	32.8	28	13.1	9.3	16	7
M 1.25	- 25 L									
M 1.5	- 25 R	10	30	37.5	39.3	34	16.2	11.5	19	9
M 1.5	- 25 L									
M 2	- 25 R	12	40	50	52.4	40	16.2	10	20	12
M 2	- 25 L									
M 2.5	- 25 R	16	50	62.5	65.5	50	20.3	12.5	26	15
M 2.5	- 25 L									
M 3	- 25 R	20	60	75	78.6	60	24.3	15	32	20
M 3	- 25 L									
M 3.5	- 25 R	25	70	87.5	91.7	70	28.4	17.5	37	22
M 3.5	- 25 L									
M 4	- 25 R	28	80	100	104.8	80	32.4	20	43	25
M 4	- 25 L									
M 5	- 25 R	28	100	125	131.0	100	40.5	25	50	30
M 5	- 25 L									
M 6	- 25 R	28	120	150	157.2	120	48.6	30	61	35
M 6	- 25 L									



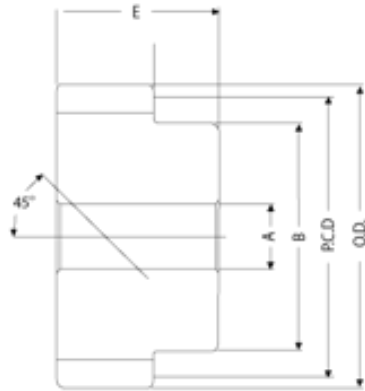




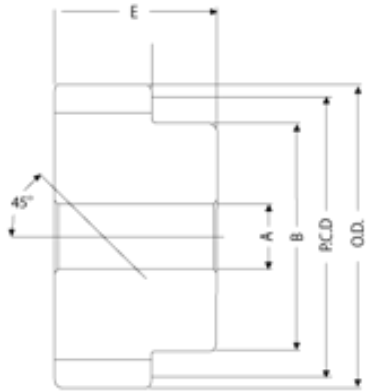
模數 Module	齒數 T	A	B	C	D	E	F	G	H	I
M 1	- 4020 R	8	25	40	40.5	22	12.5	8	12	6
M 1	- 2040 L	6	16	20	22.0	28	8.5	7	12	
M 1.5	- 4020 R	10	38	60	60.7	35	20.7	15	22	10
M 1.5	- 2040 L	8	25	30	33.1	46	16.8	14.8	24	
M 2	- 4020 R	12	40	80	81.0	45	26.0	18	27	15
M 2	- 2040 L	12	32	40	44.1	60	21.0	18	32	
M 2.5	- 4020 R	15	50	100	101.2	55	31.2	20	34	20
M 2.5	- 2040 L	12	40	50	55.1	75	26.3	22.5	40	
M 3	- 4020 R	20	60	120	121.5	65	36.5	24	38	22
M 3	- 2040 L	16	50	60	66.1	90	31.5	27.5	47	
M 4	- 4020 R	20	70	160	162.0	80	42	28	45	28
M 4	- 2040 L	20	60	80	88.2	120	42	35	62	

模數 Module	齒數 T	A	B	C	D	E	F	G	H	I
M 2.5	- 3618 R	15	55	90	91.3	43	21.7	13	24	16
M 2.5	- 1836 L	12	38	45	50.1	64	20.3	17.3	32	
M 3	- 3618 R	20	60	108	109.5	52	26.5	17	30	20
M 3	- 1836 L	16	46	54	60.1	75	22.5	19	37	
M 4	- 3618 R	20	70	144	146.0	72	38	25	42	26
M 4	- 1836 L	20	60	72	80.2	100	30	25	49	



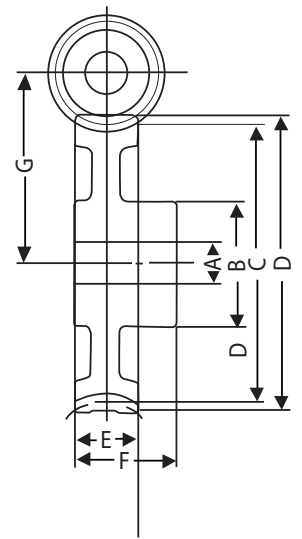
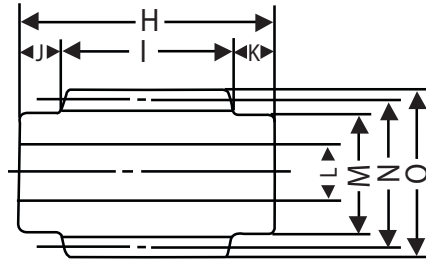


模數 Module	齒數 T	A	P.C.D	O.D	A	B	C	D	E
M 1.5	- 10	R	21.21	24.2	8	16	10	15	25
M 1.5	- 10	L	21.21	24.2	8	16	10	15	25
M 1.5	- 13	R	27.57	30.6	10	23	10	15	25
M 1.5	- 13	L	27.57	30.6	10	23	10	15	25
M 1.5	- 15	R	31.82	34.8	10	25	10	15	25
M 1.5	- 15	L	31.82	34.8	10	25	10	15	25
M 1.5	- 20	R	42.42	45.4	12	30	10	15	25
M 1.5	- 20	L	42.42	45.4	12	30	10	15	25
M 1.5	- 26	R	55.15	58.1	12	40	10	15	25
M 1.5	- 26	L	55.15	58.1	12	40	10	15	25
M 1.5	- 30	R	63.60	66.6	12	45	10	15	25
M 1.5	- 30	L	63.60	66.6	12	45	10	15	25
M 2	- 10	R	28.28	32.2	12	22	15	20	35
M 2	- 10	L	28.28	32.2	12	22	15	20	35
M 2	- 13	R	36.77	40.7	12	30	15	20	35
M 2	- 13	L	36.77	40.7	12	30	15	20	35
M 2	- 15	R	42.42	46.4	12	35	15	20	35
M 2	- 15	L	42.42	46.4	12	35	15	20	35
M 2	- 20	R	56.57	60.5	15	45	15	20	35
M 2	- 20	L	56.57	60.5	15	45	15	20	35
M 2	- 26	R	73.54	77.5	20	60	15	20	35
M 2	- 26	L	73.54	77.5	20	60	15	20	35
M 2	- 30	R	84.85	88.8	20	65	15	20	35
M 2	- 30	L	84.85	88.8	20	65	15	20	35
M 2.5	- 10	R	35.35	40.3	12	26	16	22	38
M 2.5	- 10	L	35.35	40.3	12	26	16	22	38
M 2.5	- 13	R	45.96	50.9	15	35	16	22	38
M 2.5	- 13	L	45.96	50.9	15	35	16	22	38
M 2.5	- 15	R	53.03	58.0	15	40	16	22	38
M 2.5	- 15	L	53.03	58.0	15	40	16	22	38
M 2.5	- 20	R	70.71	75.7	20	60	16	22	38
M 2.5	- 20	L	70.71	75.7	20	60	16	22	38
M 2.5	- 26	R	91.92	96.9	20	70	16	22	38
M 2.5	- 26	L	91.92	96.9	20	70	16	22	38
M 2.5	- 30	R	106.06	111.0	20	80	16	22	38
M 2.5	- 30	L	106.06	111.0	20	80	16	22	38



模數 Module	齒數 T	A	P.C.D	O.D	A	B	C	D	E
M 3	- 10	R	42.42	48.4	15	34	18	25	43
M 3	- 10	L							
M 3	- 13	R	55.15	61.1	20	45	18	25	43
M 3	- 13	L							
M 3	- 15	R	63.63	69.6	20	50	18	25	13
M 3	- 15	L							
M 3	- 20	R	84.85	90.8	20	60	18	25	43
M 3	- 20	L							
M 3	- 26	R	110.30	116.3	20	80	18	25	43
M 3	- 26	L							
M 3	- 30	R	127.26	133.3	20	90	18	25	43
M 3	- 30	L							
M 4	- 10	R	56.56	64.5	20	45	20	30	50
M 4	- 10	L							
M 4	- 13	R	73.53	81.5	20	60	20	30	50
M 4	- 13	L							
M 4	- 15	R	84.84	92.8	20	70	20	30	50
M 4	- 15	L							
M 4	- 20	R	113.13	121.1	20	90	20	30	50
M 4	- 20	L							
M 4	- 26	R	147.07	155.0	20	100	20	30	50
M 4	- 26	L							
M 4	- 30	R	169.68	177.7	20	110	20	30	50
M 4	- 30	L							

# 蜗輪 WORM GEAR

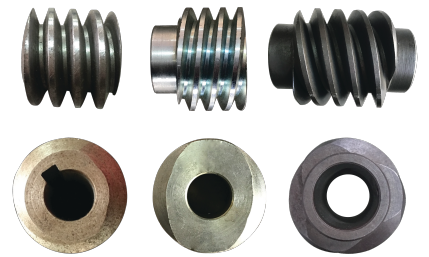
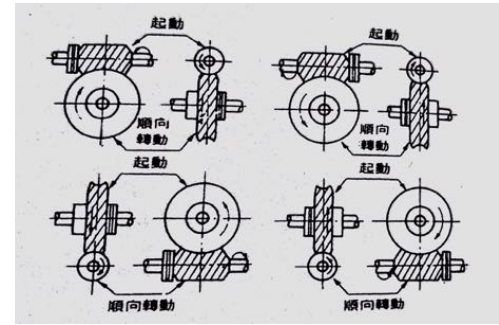


模數 Module	條數	H	I	J	K	形式	L	M	N	O
M 1	R1	32	20		12	單邊	6	18	16	18
M 1	R2	32	20		12		6	18	16	18
M 1.5	R1	40	30		10	單邊	8	20	25	28
M 1.5	R2	40	30		10		8	20	25	28
M 2	R1	46	32		14	單邊	12	25	31	35
M 2	R2	46	32		14		12	25	31	35
M 2.5	R1	63	45		18	單邊	15	30	37	42
M 2.5	R2	63	45		18		15	30	37	42
M 3	R1	70	50		20	單邊	16	35	44	50
M 3	R2	70	50		20		16	35	44	50
M 4	R1	95	70		25	變邊	22	50	62	70
M 4	R2	95	70		25		22	50	62	70
M 5	R1	125	85	20	20	變邊	25	58	70	80
M 5	R2	125	85	20	20		25	58	70	80
M 6	R1	150	100	25	25	變邊	30	64	80	92
M 6	R2	150	100	25	25		30	64	80	92

模數 Module	齒數 T	減速比 Reduction ratio	條數	A	B	C	D	E	F	G
M 1	- 20	1/10	R 2	6	16	20	22	10	20	18.0
M 1	- 20	1/20	R 1	6	16	20	22	10	20	18.0
M 1	- 30	1/30	R 1	6	20	30	32	10	20	23.0
M 1	- 40	1/40	R 1	8	26	40	42	10	20	28.0
M 1	- 50	1/50	R 1	8	30	50	52	10	20	33.0
M 1.5	- 20	1/10	R 2	8	22	30	33	12	22	27.5
M 1.5	- 20	1/20	R 1	8	22	30	33	12	22	27.5
M 2	- 20	1/10	R 2	12	33	40	44	22	35	35.5
M 2	- 20	1/20	R 1	12	33	40	44	22	35	35.5
M 2.5	- 20	1/10	R 2	12	38	50	55	22	36	43.5
M 2.5	- 20	1/20	R 1	12	38	50	55	22	36	43.5
M 3	- 20	1/10	R 2	20	50	60	66	28	43	52.0
M 3	- 20	1/20	R 1	20	50	60	66	28	43	52.0
M 4	- 20	1/10	R 2	20	65	80	88	35	52	71.0
M 4	- 20	1/20	R 1	20	65	80	88	35	52	71.0
M 5	- 20	1/10	R 2	22	75	100	110	45	65	85.0
M 5	- 20	1/20	R 1	22	75	100	110	45	65	85.0
M 6	- 20	1/10	R 2	25	100	120	132	52	72	100.0
M 6	- 20	1/20	R 1	25	100	120	132	52	72	100.0

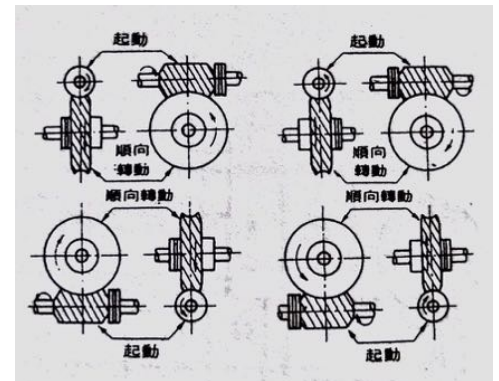
模數 Module	齒數 T	減速比 Reduction ratio	條數	A	B	C	D	E	F	G
M 1	- 60	1/60	R,L 1	10	30	60	62	10	20	38.0
M 1	- 80	1/80	R,L 1	10	35	70	82	10	20	48.0
M 1	- 100	1/100	R,L 1	10	40	100	102	10	20	58.0
M 1	- 120	1/120	R,L 1	10	40	120	122	10	20	68.0
M 1.5	- 30	1/30	R,L 1	10	30	45	48	12	22	35.0
M 1.5	- 40	1/40	R,L 1	12	30	60	63	12	22	42.5
M 1.5	- 50	1/50	R,L 1	12	40	75	78	14	24	50.0
M 1.5	- 60	1/60	R,L 1	12	40	90	93	14	24	57.5
M 1.5	- 80	1/80	R,L 1	15	50	120	123	14	24	72.5
M 1.5	- 100	1/100	R,L 1	15	50	150	153	14	24	87.5
M 2	- 20	1/10	R,L 2	12	36	40	44	22	35	35.5
M 2	- 20	1/20	R,L 1	12	36	40	44	22	35	35.5
M 2	- 30	1/15	R,L 2	12	48	60	64	22	35	45.5
M 2	- 30	1/30	R,L 1	12	48	60	64	22	35	45.5
M 2	- 40	1/40	R,L 1	12	55	80	84	22	35	55.5
M 2	- 50	1/25	R,L 2	12	60	100	104	22	35	65.5
M 2	- 50	1/50	R,L 1	12	60	100	104	22	35	65.5
M 2	- 60	1/60	R,L 1	12	65	120	124	22	35	75.5
M 2.5	- 20	1/10	R,L 2	12	38	50	55	22	36	43.5
M 2.5	- 20	1/20	R,L 1	12	38	50	55	22	36	43.5
M 2.5	- 30	1/15	R,L 2	12	50	75	80	22	36	56.0
M 2.5	- 30	1/30	R,L 1	12	50	75	80	22	36	56.0
M 2.5	- 40	1/40	R,L 1	15	55	100	105	22	36	68.5
M 2.5	- 50	1/25	R,L 2	15	60	125	130	22	36	81.0
M 2.5	- 50	1/50	R,L 1	15	60	125	130	22	36	81.0
M 2.5	- 60	1/60	R,L 1	15	70	150	155	22	36	93.5
M 3	- 20	1/10	R,L 2	20	50	60	66	28	43	52.0
M 3	- 20	1/20	R,L 1	20	50	60	66	28	43	52.0
M 3	- 30	1/15	R,L 2	20	65	90	96	28	43	67.0
M 3	- 30	1/30	R,L 1	20	65	90	96	28	43	67.0
M 3	- 40	1/40	R,L 1	20	70	120	126	30	45	82.0
M 3	- 50	1/25	R,L 2	20	75	150	156	30	45	97.0
M 3	- 50	1/50	R,L 1	20	75	150	156	30	45	97.0
M 3	- 60	1/60	R,L 1	20	80	180	186	30	45	112.0
M 4	- 20	1/10	R,L 2	20	65	80	88	35	52	71.0
M 4	- 20	1/20	R,L 1	20	65	80	88	35	52	71.0
M 4	- 30	1/15	R,L 2	20	70	120	128	35	52	91.0
M 4	- 30	1/30	R,L 1	20	70	120	128	35	52	91.0
M 4	- 40	1/40	R,L 1	20	80	160	168	35	52	111.0
M 4	- 50	1/25	R,L 2	20	85	200	208	35	52	131.0
M 4	- 50	1/50	R,L 1	20	85	200	208	35	52	131.0
M 4	- 60	1/60	R,L 1	20	90	240	248	35	52	151.0
M 5	- 20	1/10	R,L 2	22	75	100	110	45	65	85.0
M 5	- 20	1/20	R,L 1	22	75	100	110	45	65	85.0
M 5	- 30	1/15	R,L 2	22	90	150	160	45	65	110.0
M 5	- 30	1/30	R,L 1	22	90	150	160	45	65	110.0
M 5	- 40	1/40	R,L 1	22	100	200	210	45	65	135.0
M 5	- 50	1/25	R,L 2	22	110	250	260	45	65	160.0
M 5	- 50	1/50	R,L 1	22	110	250	260	45	65	160.0
M 5	- 60	1/60	R,L 1	22	120	300	310	45	65	185.0
M 6	- 20	1/10	R,L 2	25	100	120	132	52	72	100.0
M 6	- 20	1/20	R,L 1	25	100	120	132	52	72	100.0
M 6	- 30	1/15	R,L 2	25	100	180	192	52	72	130.0
M 6	- 30	1/30	R,L 1	25	100	180	192	52	72	130.0
M 6	- 40	1/40	R,L 1	25	110	240	252	52	72	160.0
M 6	- 50	1/25	R,L 2	25	120	300	312	52	72	190.0
M 6	- 50	1/50	R,L 1	25	120	300	312	52	72	190.0
M 6	- 60	1/60	R,L 1	25	130	300	372	52	72	220.0

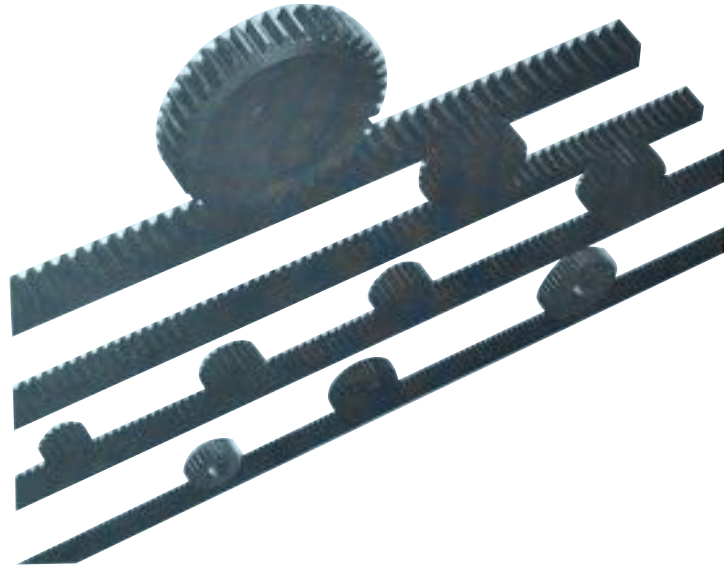
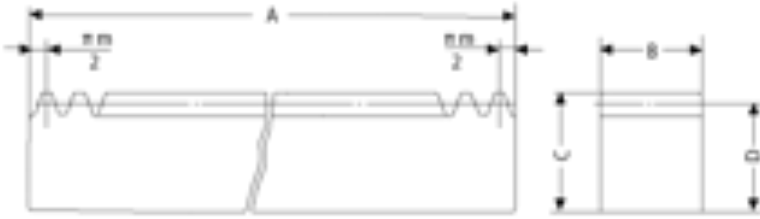
**R**



左1條 (R,L 1)      左2條 (R,L 2)      左3條 (R,L 3)

**L**



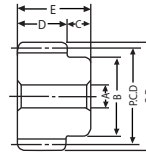


模數 Module	H	I	J	K	L
M 1.5	1000	15	20	18.5	212
M 2	1000	20	25	23.0	160
M 2.5	1000	25	30	27.5	128
M 3	1000	30	35	32.0	106
M 4	1000	40	45	41.0	80
M 5	1000	50	50	45.0	64
M 6	1000	60	60	54.0	53
M 8	1000	75	75	67.0	40

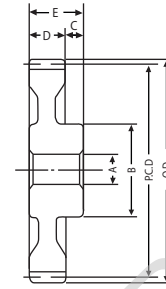
模數 Module	正方 Square	I
M 1	1/2", 5/8"	1000 m/m
M 2	5/8", 3/4"	1000 m/m
M 1.5	3/4", 7/8", 1"	1000 m/m
M 2.5	7/8", 1", 1 1/4"	1000 m/m
M 3	1", 1 1/4"	1000 m/m
M 4	1 1/4", 1 1/2"	1000 m/m
M 5	1 1/4", 1 1/2", 1 3/4"	1000 m/m



# 正齒輪 SPUR GEAR

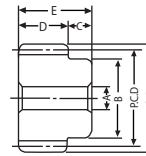


▲ 12T ~ 75T

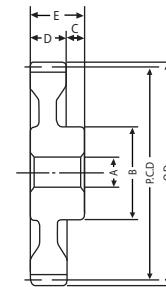


▲ 80T ~ 100T

模數 Module	齒數 T	P.C.D	O.D	A	B	C	D	E	模數 Module	齒數 T	P.C.D	O.D	A	B	C	D	E
M 2	- 12	24.0	28.0	10	18	15	20	35	M 2	- 36	72.0	76.0	12	55	15	20	35
M 2	- 13	26.0	30.0	10	20	15	20	35	M 2	- 40	80.0	84.0	15	55	15	20	35
M 2	- 14	28.0	32.0	10	20	15	20	35	M 2	- 42	84.0	88.0	15	55	15	20	35
M 2	- 15	30.0	34.0	12	24	15	20	35	M 2	- 45	90.0	94.0	15	55	15	20	35
M 2	- 16	32.0	36.0	12	26	15	20	35	M 2	- 48	96.0	100.0	15	55	15	20	35
M 2	- 17	34.0	38.0	12	28	15	20	35	M 2	- 50	100.0	104.0	15	55	15	20	35
M 2	- 18	36.0	40.0	12	30	15	20	35	M 2	- 55	110.0	114.0	15	55	15	20	35
M 2	- 19	38.0	42.0	12	31	15	20	35	M 2	- 56	112.0	116.0	15	55	15	20	35
M 2	- 20	40.0	44.0	12	32	15	20	35	M 2	- 60	120.0	124.0	15	60	15	20	35
M 2	- 21	42.0	45.0	12	34	15	20	35	M 2	- 64	128.0	132.0	15	60	15	20	35
M 2	- 22	44.0	48.0	12	36	15	20	35	M 2	- 65	130.0	134.0	15	60	15	20	35
M 2	- 23	46.0	50.0	12	37	15	20	35	M 2	- 70	140.0	144.0	15	60	15	20	35
M 2	- 24	48.0	52.0	12	38	15	20	35	M 2	- 72	144.0	148.0	15	60	15	20	35
M 2	- 25	50.0	54.0	12	40	15	20	35	M 2	- 75	150.0	154.0	20	60	15	20	35
M 2	- 26	52.0	56.0	12	42	15	20	35	M 2	- 80	160.0	164.0	20	60	15	20	35
M 2	- 27	54.0	58.0	12	45	15	20	35	M 2	- 85	170.0	174.0	20	70	15	20	35
M 2	- 28	56.0	60.0	12	45	15	20	35	M 2	- 90	180.0	184.0	20	70	15	20	35
M 2	- 30	60.0	64.0	12	50	15	20	35	M 2	- 95	190.0	194.0	20	70	15	20	35
M 2	- 32	64.0	68.0	12	50	15	20	35	M 2	- 100	200.0	204.0	20	70	15	20	35
M 2	- 35	70.0	74.0	12	52	15	20	35									



▲ 12T ~ 56T



▲ 60T ~ 100T

模數 Module	齒數 T	P.C.D	O.D	A	B	C	D	E	模數 Module	齒數 T	P.C.D	O.D	A	B	C	D	E
M 2.5	- 12	30.0	35.0	12	23	17	25	42	M 2.5	- 32	80.0	85.0	15	70	17	25	42
M 2.5	- 13	32.5	37.5	12	25	17	25	42	M 2.5	- 35	87.5	92.5	15	70	17	25	42
M 2.5	- 14	35.0	40.0	12	25	17	25	42	M 2.5	- 36	90.0	95.0	15	70	17	25	42
M 2.5	- 15	37.5	42.5	15	30	17	25	42	M 2.5	- 40	100.0	105.0	20	70	17	25	42
M 2.5	- 16	40.0	45.0	15	32	17	25	42	M 2.5	- 42	105.0	110.0	20	70	17	25	42
M 2.5	- 17	42.5	47.5	15	35	17	25	42	M 2.5	- 45	112.5	117.5	20	70	17	25	42
M 2.5	- 18	45.0	50.0	15	38	17	25	42	M 2.5	- 48	120.0	125.0	20	70	17	25	42
M 2.5	- 19	47.5	52.5	15	39	17	25	42	M 2.5	- 50	125.0	130.0	20	70	17	25	42
M 2.5	- 20	50.0	55.0	15	40	17	25	42	M 2.5	- 55	137.5	142.5	20	70	17	25	42
M 2.5	- 21	52.5	57.5	15	42	17	25	42	M 2.5	- 56	140.0	145.0	20	70	17	25	42
M 2.5	- 22	55.0	60.0	15	44	17	25	42	M 2.5	- 60	150.0	155.0	25	70	17	25	42
M 2.5	- 23	57.5	62.5	15	46	17	25	42	M 2.5	- 64	160.0	165.0	25	80	17	25	42
M 2.5	- 24	60.0	65.0	15	48	17	25	42	M 2.5	- 65	162.5	167.5	25	80	17	25	42
M 2.5	- 25	62.5	67.5	15	50	17	25	42	M 2.5	- 70	175.0	180.0	25	80	17	25	42
M 2.5	- 26	65.0	70.0	15	55	17	25	42	M 2.5	- 72	180.0	185.0	25	80	17	25	42
M 2.5	- 27	67.5	72.5	15	60	17	25	42	M 2.5	- 75	187.5	192.5	25	80	17	25	42
M 2.5	- 28	70.0	75.0	15	60	17	25	42	M 2.5	- 80	200.0	205.0	25	80	17	25	42
M 2.5	- 30	75.0	80.0	15	65	17	25	42	M 2.5	- 100	250.0	255.0	30	90	17	25	42





